

ODRA MT4H Mechanical Road Sweeper

The only **proven mechanical sweeper** on the American market combining a **powerful sweeping module** with a **non-CDL commercial truck chassis** with over 16 years experience and more than 1,100 sweepers sold.



parts.odrasweeper.com

- Cylinders
- Elevator Assemblies
- Bearings
- Drag Shoes
- Broom Arms
- Chain
- Shafts
- Sensors
- Bushings
- Hydraulics
- Water Strainers
- Strobes
- Mirrors
- Sprockets

**Genuine OEM parts at
factory direct pricing and shipping.**

ODRA
ROAD SWEEPERS



info@odrasweeper.com

844-888-6372

odrasweeper.com



2014 Cimline Magma 150 gallon Melter Applicator 1,630 hrs. Comes w/sand troth that drops in on side, no bolts, perfect only 1 operator \$25,000 or best offer 508-259-2716 (x/K-22)



Graco Line Driver, asking \$4,500 Call: 619-654-7137 (x/K-22)



2006 Isuzu 14,000GVW Chassis with Tymco 210 Sweeper \$15,000, Bought New - One Owner. All service records available, more info on request. Pre-emission engines. Updating our fleet. Call Mike at 260-478-4840 or email mike.summitsweeping@gmail.com



LeeBoy 8000 Paver 3500hrs, very nice machine, cable over hydraulics. Manual operation, Propan-Screed w/vibrator w/ functioning Indiana 47421 \$18,500 jdarthurpaving@att.net 812-276-9556 (x/K-22)



2017 LeeBoy 8616 Kubota 111 HP Diesel, 8-15 Legend Electric Screed, 9 ton Conveyor Hopper and Poly Pads. Sloping Screed Extensions Heated Endgates Power Crown \$110,000 603-644-8787



2005 Schwartz A8000, Sterling Chassis high dump air sweeper, Dual steering, Dual gutter brooms, Cummins Engine, JDere Aux engine, Hose wand, Water Sys, Cab forward, 450 gallon water tank, Cali rust free machine - Anthony 916-568-0104 (x/K-22)

PRSR STD
US POSTAGE
PAID
STEVENS POINT WI
PERMIT NO. 272

Power & Sweeper Market
Bellevue, Wa. 98005
12020 SE 32nd St. Suite 4
April 2022



MODEL 600® COMDEX®
Street Sweeper

Because swept is not always clean, contact **TYMCO**. We offer a wide variety of Regenerative Air Street and Parking Lot Sweepers to meet

your needs. Regenerative Air sweepers blast into pavement cracks with up to a 250 mph controlled jet of air, forcing up even the finest sand and particulates into a totally enclosed system - never exhausting dirty air as vacuum sweepers do. All with only a few moving parts reducing maintenance cost and downtime.

Arrange a demonstration today!
1-800-258-9626
www.tymco.com



MODEL 210®
Parking Lot Sweeper



LeeBoy 8000 ready to operate. 3500 hrs, very nice machine. Machine is cable over hydraulics. Manual operation, very simple. Propane heated, Legend Scream w/vibrator with functioning automatics. Condition used. Bedford, Indiana 47421 \$18,500. jdarthurpaving@att.net 812-276-9556 (x/K-22)



Diamond Built 200 Gallon Tank with Honda 5.5 BHP gas engine @ pump, spray wand with 25' of hose \$3,500. 916-624-8855 (x/K-21)



2003 Elgin Broom Bear / Freightliner (CAT) 79421 miles, Allison Tran Dual Steering, Dual Gutter Brooms \$38,000 Keith 402-593-870



2014 Voegel Super 1800-2 Spray Jet, 2920 Hrs, new undercarriage, track pads & floors, screed plates, heaters, spray bars, tank holds 725 gal, Auto fill pump sys. ready to work, \$260,000, ALL STATES ASPHALT INC. 413-537-8918



1998 Crafco Super Shot 125 crack sealer machine, refurbished and ready to go. \$12,000, 916-625-8855 (x/K-21)



2003 Elgin Broom Bear, Freightliner (CAT), 79421 miles, Allison Trans, Dual Steering, Dual Gutter Brooms, \$38,000, Keith 402-593-8708 (x/K-22)



1981 Tymo 600 BAH, Ford F700 Truck Eng. JD Power Unit, Allison Trans, Replaced with in 5 years, Imp recoated and balanced, blower housing recoated, new bearings Imp shaft, Serviced, Painted, Very Good Condition, Owner Retired, \$6,000 218-732-7170 MN (x/D-23)



1996 Tennant 810 Sweeper and Trailer. One owner. 4000 hrs. Tennant maintains unit. Good runner. New tires. Brooms good. Ready to work. Sweeper and Trailer: \$13,100, Contact Jay Shafer. @ Shafer Equipment. 775-331-7772 (Reno, Nv)



Johnston 4000 broom sweeper Cummins diesel, dual gutterbrooms, 5 yd dumpster, rear dump spray system. 619-766-9973 (x/G-22)

(800) 288-7933

2018
A8 TWISTER
HIGH DUMP UNIT



HIGH DUMP, STAINLESS STEEL , DUAL BROOMS, DUAL TILT, DUAL GEO, HOPPER SHAKER, JOHN DEERE



2010 SCHWARZE A9



2016 A8 TWISTER



2012 SCHWARZE



Stock units are subject to prior sale. Units are offered with any remaining factory warranty where applicable, or as is. Terms are COD or proper execution of financing. Payments and terms are subject to credit approval. All units are FOB Upland, CA

SWEEPING EQUIPMENT SPECIALISTS

WWW.SWEEPERSHOP.COM



2004 Tymo 435 on an NPR Miles: 204,418 hourmeter: 3262. Well maintained and ready to sweep with a STAINLESS STEEL hopper. Located in GA \$40,000 Call Mike 770-433-8089



Thermo Longliner, 1997 Ford, 4,000lb, Only 52,000 miles, Needs work, \$35,000 call: 570-401-1047 (x/G-20)



2 – 2008 Kubota 3240 Hydro 4 wheel drive, A/C excellent condition. Also have broom attachments for each machine if interested as additional cost. \$12000 ea **John Deere Tractor** w/broom attachment 1000hrs like new asking \$7,000 2 – **Bumbmill attachments** @ \$4000 ea and 3-Broom attachments @ \$3000 ea 727-642-1243 or 727-417-7950 (x/I-18)



2006 Schwarze A-7000. 20,200 orig miles. Very very good condition, \$29,500, Mitch Barkman 330-351-2333



2000 Elgin Crosswind J Series International chassis John Deere Aux, dual steer and side brooms. Mileage 14,700 aux hrs 3283, \$15,000 585-329-6416 (x/H-21)



NEW 40 TPH Asphalt Plant & AC tank 400K, Counter flow, External Mix, Baghouse with fines recovery system, Rap Collar, Call 305-436-8228 or 754-235-8228 (Financing Available) admin@dmiashalthequipment.com (x/A-21)



2003 Tymo 210, 18032 miles, \$17,995 800-448-9364 (x/K-18)



2018 Weiler tt500 gal tack trailer/remote 12ft spray bar& handwand, elect tank heater, propane burners 19000. 605-999-1260 (x/F-19)



2011 Isuzu NRR Box Truck, 18034 =, \$24,995 175,000, 800-448-9364 (x/K-18)

Trantex 360MII Thermoplastic Applicator, 360lb Material capacity, 4 inch steel Die, Newtown Ohio \$12,950 includes pointer

Trantex 720 ESH Thermoplastic Pre-melter, insulated steel tank

In Stock in Marham, IL \$16,600 call Mike 800-397-1984 or 708-339-9000



Asphalt Shooter— manually operated chutes designed for filling of sandbags. Spring blowout special! MSRP \$8526 **NOW \$6821** Attachment international 218-863-6444 www.attachmentsintl.com (x/L-21)



2000 Elgin Crosswind J Series International chassis John Deere Aux, dual steer and side brooms. Mileage 14,700 aux hrs 3283, \$15,000 585-329-6416 (x/H-21)



2018 Schwarze Vortex Sweeper, Isuzu, GAS/GAS, 69k miles/1760 h steel hopper, trash rack, new Michelin XPS Rib tires, very clean \$59,900 obo 603-598-2608 (x/H-21)

Sold

Sold



2005 Schwarze M6000, International 4200 chassis under 31,000 miles **MUST SELL OUTSIDE CA DUE TO CARB REGULATIONS OR MUST HAVE FILTER INSTALL!** Intl 6.0 like new 2011 Deutz rear w/ 500 working hrs Octavio 323-369-1900, \$ 35,000 (x/ B-20)



2002 GMC Schwarze A4000 Sweeper. Dual Broom. Full Water System., Fleet maintained. 122,914 Miles/5,064 Hours., \$30,000 Call 586-755-9400 (x/B-20)



1999 Tymo 210, Isuzu NPR, 83,690 miles, 6264 hours on back engine, needs ac control panel, radio is old, new tires and new paint job and water system nice backup or start up sweeper truck. \$18,000, call 504-784-3029



2016 Schwarze Updraft has damage to both doors and cab corners, runs drives and operates. Salvage title, 99,760 miles. \$21,000 OBO 603-930 -7216 (x/B-20)



2009 Elgin Eagle F, Nissan, Diesel Engine, Automatic, 57k Miles, Rear Engine 6,338 hrs, JD diesel Rear Engine, Rear Broom, (2) Gutter Brooms, Water System, Ex-City Unit 801-974-0888 (x/L-02)



2002 LaFarge Titan 1000 Striper with tri-axle trailer. 600 lb capacity, Excellent Condition. \$24,000 FOB Longwood, FL 407-578-8308 (x/L-20)



2002 Elgin Broom Bear Freightliner FL70 CAT 3126. 122,773 miles and is fully operational. Mechanical sweeper with rear rotary and 2 gutter brooms. Large water tank. \$22,500 Sean 559-647-0462 to discuss purchase and transport. (x/C-20)



1996 Paint Striper Truck Mack 200 has 50573 miles on it. The back side paint section Has Leroi with 2084 hrs, Wilden M8 pumps, Skipline controls. We are asking \$150,000 obo 606-669-9396 (x/K-22)



1999 Elgin Broombear high dump, cat 3126, 110k miles. \$30,000 OBO 603 903-7216 (x/B-20)



1999 Schwarze M5000, Ford C8000 chassis, MUST SELL OUTSIDE CA Cummins Eagle F, 2008 GMC 7500, Isuzu Diesel Engine (Drive), John Deere Aux. Diesel Engine, 4,255 hrs, 26k Miles, Ex County Unit gs 5.9l rear John Deere 4cyl, Octavio 323-369-1900, \$ 25,000 (x/ B-20)



2013 Schwarze A4000, 1,700 hours, 69,000 miles 67" Dump Ht., 124" Sweep Width \$54,750, Call for details: Otto 516-681-7600 x5314 (x/A-21)



1989 Tymco 600 - Good working condition - Owner Retired - \$15,000 friesen obo. Leave voicemail or text, 559-287-0686. (x/K-22)



2006 Mitsubishi Fuso Patch Master Infrared Asphalt Patch Truck, only 900 miles, Case @ Big Truck Equipment 877-926-1015



Buffalo Turbine Cyclone 2, Low Hours, Remote, \$7425.00 OBO Tony 713-897-1609 Houston, TX (K-21)



1991 Bomag Tandem Vibratory Roller, Model # Bw120 AD Newly Refurbished and ready to roll, Asking \$8,500 916-624-8855



2003 Schwartz M6000, 46000 miles, 6700 hours, new elevator, new hydraulic pump, new hydraulic manifold. And a rebuilt hopper. This unit will be a good work horse for a long time. \$98,000 Call Wayne at 520-240-3243



Asphalt & Emulsion Storage Tanks different sizes up to 30,000 Gallons options coiled, unloading pump, heater, agitators, admin@dmiasphaltequipment.com 305-436-8228 or 754-235-7356 (x/A-21)



Seal Coat Tanks for sale, 250 gal tank \$1400. Also have 500 gal for \$1900 and 150 gal for \$950. Call 815-992-1551 (x/L-22)



2007 Tymco 435 on Isuzu NQR chassis Ready to sweep \$30,000 503-867-5425 (x/L-20)



98 Flow Boy CB4000 Live Bo \$19,500, 616-836-5691 Zeeland, MI (x/L-20)



2003 Schwartz M6000, 46000 miles, 6700 hours, new elevator, new hydraulic pump, new hydraulic manifold. And a rebuilt hopper. This unit will be a good work horse for a long time. \$98,000 Call Wayne at 520-240-3243



Kaiser-Morris 6,000 gallon storage tank. Honda 13 hp engine, 2 inch Roper pump. Works excellent, cleaned and ready for work. Raleigh, \$13,500 NC. 540 420 4886 (x/D-21)



2007 MRL 8K longliner new pumps, double drop, low miles asking \$185,000 OBO 561-662-4642 email adam@southwideindustries.com (x/H-21)



1992 Etnyre Distributor Sam-2, International with 3,730-gallon tank with diesel burners, 165,652 miles. 18 ft spray bar, runs good. \$20,000 814-764-5080 x107 (x/E-21)



Reid Manufacturing LLC.
155 Evelyn S. Wade Blvd.
Buchanan, Ga. 30113
770-646-6998

DR-Utility Trench Paver

- Easily adapts to a bucket.
- Paving Depths 0-5"
- Two Models DR100 - DR150.
- 1/4" Heavy Duty Steel Construction.
- Easy Adjustable width from 24" - 48"
- Independent adjustment depth Screws.
- Side end shoes adjustable 0" - 4"



www.ditchrunner.com

We also sell parts for Neal, Nealco, Blaw -Knox, and Ingersol-Rand sealcoat machines



2018 Cimline M4 Melter Applicator Dual Pump Isuzu Diesel, Dual Pump, Dual Heated Hose, Clean, 400 gallon, Serviced and Ready. 1500 Hours »»» \$45,000



2009 Crafcro EZ1000EB Isuzu Diesel, Diesel Burner, Heated Hose and Wand. Runs good and has been through our shop. Hours: 2622 »»» \$28,000



2019 Marathon 250 Mastic Melter Kohler Diesel Engine, Diesel Burner, Heated Chute, Heated Tool Cabinet, 250 Gallon »»» \$44,000



Pavement Products & Equipment

SealMaster Indianapolis

www.jbequip.net | 1010 E Sumner Ave | Indianapolis, IN 46227

**Please contact Jake
at 419-388-3834**

Everybody
Wants



Because with **one**,
you get a whole lot **more!**

BUILT BY ELGIN® **X** DESIGNED BY YOU

ELGIN Regen**X6**™

LEARN
MORE



MIDSTATES

Equipment & Supply

The #1 Source for your asphalt maintenance equipment and supply

- * Graco Dealer
- * Billy Goat & Little Wonder Dealer
- * Kasi Infrared Dealer
- * Bomag Fayat Group Dealer
- * Marathon Equipment Dealer
- * Smith Manufacturing Dealer
- * Cimline Pavement Maintenance Dealer

* Line of NEW and USED Cimline and Marathon Melters Available.

* Low Hour Melter Rental Units Available for Purchase.

* Good Selection of NEW and USED Routers on Hand.



Maxwell, McAsphalt, Pure Asphalt and
W.R. Meadows Products Dealer
for Crack Sealing Material for the 5 state area:
Minnesota * Wisconsin * Iowa * North Dakota * South Dakota

Toll-Free: 1-800-929-3807

Email: midstates@midstatesequipment.net
Web: www.midstatesequipment.net

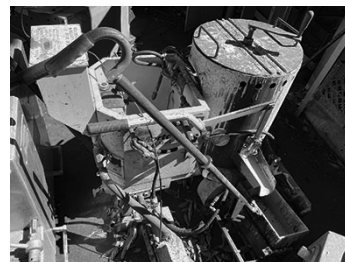
606 County Road #1 * Mountain Lake, MN 56159



Graco Line Driver, asking \$4,500 Call: 619-654-7137 (x/K-22)



TMT1003 Thermo Longliner, Low hours, asking \$58,000 Call: 619-654-7137 (x/K-22)



4) Morton Thermo push cart with 12inch die. \$3500 obo. Call: 619-654-7137 (x/K-22)



4000lb Thermo Tanks asking \$8,000 Call: 619-654-7137 (x/K-22)

Reduce your SWEEPING COSTS

WITH MOBIL-SWEEPER



GET Top Performance AT LOWER COST!

Discover new ways to save money on street sweeping, airport sweeping, and highway construction with the big Mobil-Sweeper. Savings of 43% over all previous methods of street sanitation are being reported by Mobil-Sweeper users. Learn more about what construction across the Nation report on actual experiences with this line sweeper. Many communities say maintenance and upkeep costs are the lowest on record. Mileage requirements are lower too. Mobil-Sweeper can change street sanitation into a money job. Traveling from the dump at top traffic speeds, Mobil-Sweeper eliminates need for a truck and pickup crew to follow. Where central dumping is used, Mobil-Sweeper's big hopper capacity makes it a top performer in this system.

You can't overlook safety—a lowered cab with shatter-proof windshield gives protection to your operator... places him in a position for better visibility—as attested by leading automotive engineers. Four wheel hydraulic brakes are a must on heavily loaded vehicles—Mobil-Sweeper has them.

CONVEYCO
Write for literature today!
MOBIL-SWEEPER
DIVISION OF THE CONVEYCO CO. 3740 E. Shaver Ave. • Los Angeles 36, Calif.
September 1953 • THE AMERICAN CITY



Sweeprite S2 Heavy Duty Street Sweeper, 4rd high dump hopper Power tilt, dual gutter broom with independent operation, many options, POR



Sweeprite S-3, 6 Yard HopperS loaded with options including dual camera systems by Safety Vision, POR,



Sweeprite S2 Heavy Duty Street Sweeper, 4 yrd high dump hopper, dual gutter brooms, Non CDL, Cummins diesel, Broom Sweeper. POR

West Warwick R.I.
401-825-6961
XPRESS SWEEPING
Order Now! Avoid the Spring Rush



2007 Tymco 435 on Isuzu NQR chassis Ready to sweep \$30,000 503-867-5425 (x/L-20)



Kaiser-Morris 6,000 gallon storage tank. Honda 13 hp engine, 2 inch Roper pump. Works excellent, cleaned and ready for work. Raleigh, \$13,500 NC. 540 420 4886 (x/D-21)



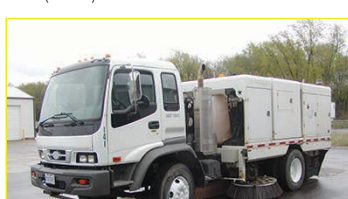
2005 Schwartz A8000, Sterling Chassis high dump air sweeper, Dual steering, Dual gutter brooms, Cummins Engine, JDDeere Aux engine, Hose wand, Water Sys, Cab forward, 450 gallon water tank, Cali rust free machine - Call for price Anthony 916-568-0104 (x/K-22)



ELGIN EAGLE: 2015-2018 units available with Freightliner M2 Chassis, Dual Steering/Side Brooms, low hours/miles, CA emission compliant, Call Joe Donlon from Custom Rebuilt @ 312-208-6373



2006 KW T300 Sealcoat Tanker. 179,568 miles. CAT C7 300 HP Eaton 10SP Man. 2500 Gallon Tank. PTO Mixer. \$72,500 626-452-8200 (x/K-22)



2011 Stewart Amos S5-T Approx 19,700 miles, 141 hours on newer rear engine, dual broom & steering. High dump, ready to sweep, \$99,000, 330-351-2333 (x/A-21)



2013 TYMCO 210 SRE on Isuzu NPR HD chassis. Refurbished, in Excellent Condition. 135,059 miles, 2,946 sweeper hours. \$ 43,000. Call Bill at 386-253-5555 (x/G-21)



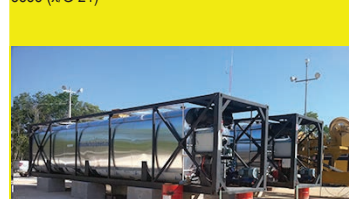
ELFIN BROOM BADGER: 2015-2019 units available with Isuzu NRR, Dual Side Brooms, low hours/miles, CA emission compliant, call Joe Donlon from Custom Rebuilt @ 312-208-6373



2007 MRL 8K longliner new pumps, double drop, low miles asking \$185,000 OBO 561-662-4642 email adam@southwideindustries.com (x/H-21)



2000 Elgin Crosswind J Series International chassis John Deere Aux, dual steer and side brooms. Mileage 14,700 aux hrs 3283 asking \$15,000 585-329-6416 (x/A-21)



Asphalt & Emulsion Storage Tanks different sizes up to 30,000 Gallons options coiled, unloading pump, heater, agitators, portability admin@dmiasphalteequipment.com 305-436-8228 or 754-235-7356 (x/A-21)



1981 Tymco 600 BAH, Ford F700 Truck Eng, JD Power Unit, Allison Trans, Replaced with in 5 years, Imp recoated and balanced, blower housing recoated, new bearings Imp shaft, Serviced, Painted, Very Good Condition, Owner Retired, \$9000 Call Jim 218-732-7170 (x/H-22)



New Demonstrator Johnston CityCat 5006
2022/2023 Single Engine Compact Sweeper
Call for Pictures & Specs 800-359-7867

KFender@PatsPump.com

Patspump@aol.com



2141 W. CHURCH ST ORLANDO FL 32805
407-841-7867 FAX 407-648-2096

SweeperMarket

The source of the
world's largest list of
used sweeping
equipment.

Call for a free subscription:
800-603-9089



www.sweepermarket.com

**1-800
STENCIL**

**Pavement Marking Stencils
For The Professional Striping Contractor**

Call us at 1-800-STENCIL (783-6245) or visit us online at www.1800stencil.com



Traffic Marking Division

~ Leaders In Traffic Safety Solutions Since 1976 ~



2007 Tymo 435 on Isuzu NQR chassis Ready to sweep \$30,000 503-867-5425 (x/L-20)



Kaiser-Morris 6,000 gallon storage tank. Honda 13 hp, 2 inch Roper pump. Works excellent, clean and ready for work. \$13,500 Raleigh, NC. 540-420-4886 (x/K-21)



Two (2) Blaw Knox PF 180H Pavers for sell in Visalia, CA. Orange paver is work ready with top con system 4 automatics. No Ski. Yellow paver needs some TLC. Both run great. POR call Russell 559 804-0098 (x/H-21)



Used 2009 Isuzu NPR-HD Nitehawk Raptor Vacuum Sweeper. Unit sold "AS IS" This is a non-running unit, but a great "parts" truck with many valuable accessories. \$5000 (928) 775-0405 office@sweptawayaz.com x(K-21)



2001 Blaw Knox, PF5510, rubber tracks, dual station, Flowgate controls, Heated, auger extension, tunnel control, Excellent condition, 9,000 Guy Collins 581-844-1784 (x/K-22)



1992 Etnyre Distributor Sam-2, International with 3,730-gallon tank with diesel burners, 165,652 miles, 18 ft spray bar, runs good. \$20,000 814-764-5080 x107 (x/E-21)



Hyster 530A 9 tire rubber roller for sale in Visalia, CA. Work ready and runs great. \$8000 Call Russell 559 804-0098 call Russell 559 804-0098 (x/H-21)



2010 Broce KR350 kickbroom 1980 hours! Enclosed cab, AC water sys, 8 foot broom and more. Kubota diesel. \$22,000 trailer at an additional cost if interested. 928-775-0405 office@sweptawayaz.com x(K-21)



2007 MRL 8K longliner new pumps, double drop, low miles asking \$185,000 OBO 561-662-4642 email adam@southwideindustries.com (x/H-21)



1992 Etnyre Distributor Sam-2, International with 3,730-gallon tank with diesel burners, 165,652 miles, 18 ft spray bar, runs good. \$20,000 814-764-5080 x107 (x/E-21)



2013 Tymo 435, Dual Broom, Dual Tilt, Recent Service, New Flaps, New Drag Shoes, Ready to Work, 138K Miles and 4,200 Hours, #900826 \$69,000 California 909-297-6954 (x/G-22)



Light Plants, Wacker Light Tower LTC-4L/0009375, \$2,000 each, 2 Available. 814-764-5080 x107 (x/E-21)



2019 Tymo 435 on Freightliner chassis, Available in Mid November approximately 7,000 miles. Call 614-679-6866 for more information (x/C-20)



2005 Tymo 435. Diesel/Diesel, dual steer, dual broom. NPR 268,069 miles, a/c non op. Kubota 7445 hours. goes out weekly, runs solid. \$12,000 909-721-3083 (x/A-21)



2006 Freightliner Elgin Broom Bear, Only 84,250 miles and 362 hours, Dual steering, Dual gutter brooms, 2 brand new batteries, Ready to work, in Marysville, WA, \$65,000 612-369-3829, (x/K-21)



2017 LeeBoy 8510D Paver 2,620 hours, new screed plates, HD screed, excellent condition. \$95,000 Call 850-599-5950 x(K-21)





2004 Tymo 435 on an NPR Miles: 204,418 hour meter: 3262. Well maintained and ready to sweep with a STAINLESS STEEL hopper. Located in GA \$40,000 Call Mike 770-433-8089 (x/G-22)



2014 Asphalt Reclaiming Tumbler Diesel Fired, Hydraulic Controlled, Rotation 9RPM, 3/16" Steel 450 Brinell Hardened Drum, (7) 3/16" 450 Brinell Hardened Agitation Paddles, 80 Gal Fuel Tank, Produces 4 Tons/ Hour, 50hrs, Use Year Round 989-777-4550 sales@spauldingmfg.com



Used 2009 Isuzu NPR-HD Nitehawk Raptor Vacuum Sweeper. Unit sold "AS IS" This is a non-running unit, but a great "parts" truck with many valuable accessories. \$5000 (928) 775-0405 office@sweptawayaz.com (x/K-21)



2014 Spaulding 4T Auger Asphalt Hot Box, Diesel Fired, Oil Jacket Hopper, Vanair, Compressor 90cfm-Hydraulic Driven, 54HP Kubota Turbo Diesel Engine 30 gallon Heated Tank w/ Hydraulic Spray System, Auger Feed, 50hrs of use, 50 hrs. of use, Asphalt Patch Machine for a Complete Job, \$70,230, 989-777-4550 sales@spauldingmfg.com



2007 Spaulding 4 T RMV, Asphalt Hot Box, Diesel Fired, Manual Doors, Solvent Tank, To Dip Shovels, Rear Strob \$18,000, 989-777-4550 sales@spauldingmfg.com



2019 Spaulding 4T RS Asphalt Hot Box Diesel Fired, Oil Jacket Hopper, Hyd Dump, Top & Rear Doors, Hydraulic Plate Tamper Platform Lift, 30 gal. Heated Tack Tank (has separate diesel burner) w/Spray Sys, Honda, Viking Pump, Amber Strobe Light, Solvent Tank for dipping Shovels, Tool Rack, Clean Unit, Never Loaded With Material \$56,000, 989-777-4550 sales@spauldingmfg.com



2002 Freightliner FL70, Seal-Rite 1500 Custom Truck Bed, 279,118 mi., \$39,600 Call or Text 573-387-4491



Seven year old Ray tech trailer mounted infrared heater with four propane tanks, excellent condition well maintained, wind shield on three sides of the main panel, Good tires. \$13,000 call 203-910-1056 (x/C-22)



ATTACH Sllide in Truck sweeper, New motor Zero hours, asking \$10,000 620-249-9716 (x/G-22)

Sweeper Parts:

Lot's of new and used parts.

'92 to 2018 Alliance 3000& 4000 series parts, 198520 1992 FMC 3000 & 4000, 1994

Athey Mobil M high dump parts, Elgin - Pelican series P& Road runner series parts, Engines & Transmission.

Hydraulic traction motor & pump assembly, broom motors & elevator parts, Art 616-766-9973



Over 18,000 Buyers and Sellers Every Month

Hand holding a magnifying glass over a small image of a yellow truck.



2006 KW T300 Sealcoat Tanker. 179,568 miles. CAT C7 300 HP Eaton 10SP Man. 2500 Gallon Tank. PTO Mixer. \$72,500. 626-452-8200 (x/K-22)



www.pavermarket.com

PaverMarket is a publication of Market Magazines Davidson-Macri Inc. PaverMarket is edited by Mark Boyer - Editor, Davidson-Macri Inc., 12020 SE 32nd St. Suite 4, Bellevue, WA, 98005, Davidson-Macri Inc. and PaverMarket assumes no responsibility for illegible, unclear and/or erroneous information in ad copy in PaverMarket.

Copyright © 2022 Market Magazines, Davidson-Macri Inc.

No part of this publication may be reproduced, stored in a retrieval system, or transmitted, in any form or by any means, electronic, mechanical, photocopying, recording or otherwise, without prior written permission of Davidson-Macri Inc.



vactorused.com

YOUR #1 SOURCE FOR USED EQUIPMENT!

- › Combination Sewer Cleaners
- › Catch Basin Cleaners
- › Vacuum Excavators
- › Industrial Vacuum Loaders
- › Street Sweepers



vactorused.com
Join our mailing list!

ELGIN

GUZZLER



TRUVAC

VACTOR



**Congratulations to David Ross
and his Millennium Maintenance
and Power Sweeping for being
chosen as PAVEMENT magazine's
Contractor of the Year for 2022!**

Ross is also on the World Sweeping Association's Advisory Board and a strong supporter of WSA. Isn't it time you took a look at WSA's \$350/year Membership?

Go to
www.WorldSweepingPros.org/whyjoin
to find out more.

DESCO MFG., INC.

D600SC -

Our D600SC was the
FIRST HYDRAULIC
seal coat machine.

NOW
AVAILABLE WITH AN
8" PUMP!



D200

Distributor -

This is the only
known machine
available in the US to
apply rejuvenator
sealer.

DESCO MFG., INC. has over 40 years of experience in
fabricating hydraulic equipment.

888-925-7029

www.descospray.com



HA-300 Pick Up Unit
on T-69 Trailer



SR-1000 Trailer
shown with Optional Equipment



8000 Gallon Bulk Storage Unit

Celebrating
25
Years

www.seal-rite.com call or text **573-387-4491**

sales@seal-rite.com • 1374 State Road M • Auxvasse, MO 65231





2007 Tymo 435 on Isuzu NQR chassis Ready to sweep \$30,000 503-867-5425 (x/L-20)



98 Flow Boy CB4000 Live Bo \$19,500, 616-836-5691 Zeeland, MI (x/L-20)



2007 MRL 8K longliner new pumps, double drop, low miles asking \$185,000 OBO 561-662-4642 email adam@southwideindustries.com (x/H-21)



Kaiser-Morris 6,000 gallon storage tank. Honda 13 hp, 2 inch Roper pump. Works excellent, clean and ready for work. \$13,500 Raleigh, NC. 540-420-4886 (x/K-21)



1992 Etnyre Distributor Sam-2, International with 3,730-gallon tank with diesel burners, 165,652 miles. 18 ft spray bar, runs good. \$20,000 814-764-5080 x107 (x/E-21)



1992 Etnyre Distributor Sam-2, International with 3,730-gallon tank with diesel burners, 165,652 miles. 18 ft spray bar, runs good. \$20,000 814-764-5080 x107 (x/E-21)



Light Plants, Wacker Light Tower LTC-4L/0009375, \$2,000 each, 2 Available. 814-764-5080 x107 (x/E-21)



2005 Tymo 435. Diesel/Diesel, dual steer, dual broom. NPR 268,069 miles, a/c non op. Kubota 7445 hours. goes out weekly, runs solid. \$12,000 909-721-3083 (x/A-21)



Two (2) Blaw Knox PF 180H Pavers for sale in Visalia, CA. Orange paver is work ready with top con system 4 automatics. No Ski. Yellow paver needs some TLC. Both run great. POR call Russell 559 804-0098 (x/H-21)



Hyster 530A 9 tire rubber roller for sale in Visalia, CA. Work ready and runs great. \$8000 Call Russell 559 804-0098 call Russell 559 804-0098 (x/H-21)



2013 Tymo 435, Dual Broom, Dual Tilt, Recent Service, New Flaps, New Drag Shoes, Ready to Work, 138K Miles and 4,200 Hours, #900826 \$69,000 California 909-297-6954 (x/G-22)



2019 Tymo 435 on Freightliner chassis, Available in Mid November approximately 7,000 miles. Call 614-679-6866 for more information (x/C-20)



2006 Freightliner Elgin Broom Bear, Only 84,250 miles and 362 hours, Dual steering, Dual gutter brooms, 2 brand new batteries, Ready to work, in Marysville, WA, \$65,000 612-369-3829, (x/K-21)



2017 Leeboy 8510D Paver 2,620 hours, new screed plates, HD screed, excellent condition. \$95,000 Call 850-599-5950 x/(K-21)



Stamped Asphalt Trailer, Turnkey operation, \$28,000 724-941-3992 (x/K-21)



2002 Isuzu NQR Thermoplastic Stencil truck with lift gate. Ready to work. 619-654-7137 (x/K-21)



BENSINK ROTARY BROOM

BENSINK

MFG.

2 Models Available

High Tensile Strength
Steel Bristle Broom

- Preps the area for sealcoating or striping.
- Crack cleaning option now included!
- Cleans tight places where sweepers can't.
- Helps to prep crank case oil spills.

Making The
Hard Parts
Easier!



503-580-0183 www.bensinkrotarybroom.com

Dealer Inquiries
Welcome

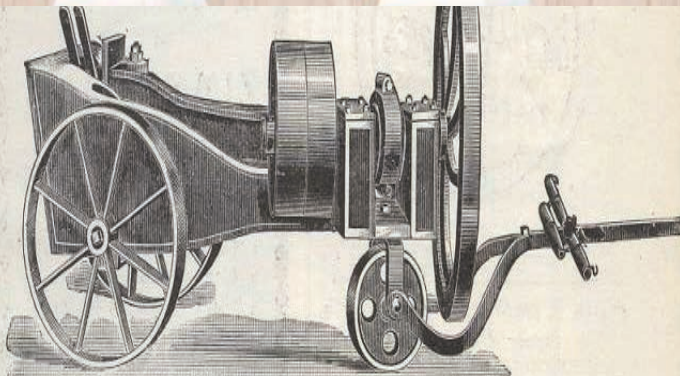
Depreciate the full cost of your Bensink Rotary Broom this year! *see IRS section 179 for details



2007 Tymo 435 on Isuzu NQR chassis Ready to sweep \$30,000 503-867-5425 (x/L-20)

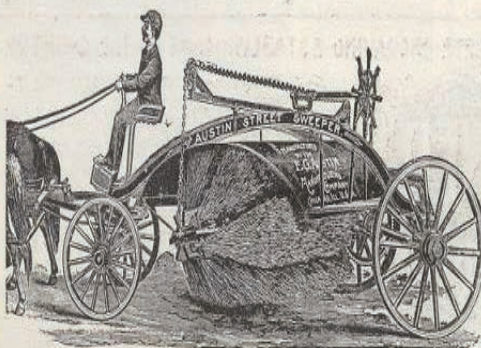


98 Flow Boy CB4000 Live Bo \$19,500, 616-836-5691 Zeeland, MI (x/L-20)



A FEW POINTS IN FAVOR OF THE CHICAGO BREAKER. 1st—SIMPLICITY. Any Ordinary Laborer can manage it. 2d—It breaks rock into more UNIFORM SIZES WITH LESS DUST. 3d—GREAT ECONOMY IN POWER; say, TWO-THIRDS LESS THAN OTHERS. 4th.—ECONOMY IN PRICE, where cost of power is considered. 5th—It is the ONLY BREAKER that can be OPERATED BY A COMMON HORSE POWER. 6th—IT IS MORE DURABLE, AND COSTS 50 PER CENT. LESS FOR REPAIRS. 7th—There are no Gear Wheels or Pinions in this machine to break.

If you want clean, paved streets you need an AUSTIN STEEL STREET SWEEPER.



F. C. AUSTIN MFG. CO.

Also ROAD ROLLERS, GARBAGE CARTS, DUMP WAGONS, SCRAPERS, Etc.

CHICAGO, ILL.

Is a strong and serviceable machine, made of steel throughout, with heavy-steel axles, and wheels especially adapted for rough city usage. It requires but two horses and a driver. Ordinary streets, twenty-eight feet between curbs, are cleaned in two rounds, and the dirt placed at the curb convenient for loading into wagons for removal. One machine will readily clean three miles of such streets after midnight. Send for special Street Sweeper Catalogue.

800-372-5007
318-343-4328

Fast Order Processing & Shipment

SHARPCO
SWEEPER SHOES

8770 Frontage Rd. Monroe, LA 71202

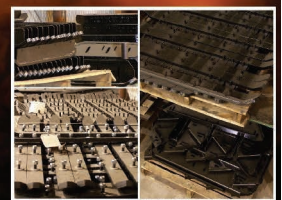
O.E.M. Manufacturer of Premium

TUNGSTEN CARBIDE DRAG SHOES
for Street Sweeping & Snow Plowing Applications

See Our
Extensive
Product
Line



Aaplex 7000
Athey Mobile
Elgin Air Cub LX; Broom Bear;
Eagle; Pelican; Crosswind
J Std & BAH, Ser G BAH;
Johnston Vanguard Air & 4000
Masco Mr. Air
Schwarze Super Vac, 333, 343,
347, 348, 3000, 4000, 6000,
7000, 8000, 9000
Skavin'jer
Tymco 210, 300, 350, 435 & 600
Wittke Wizard



Huge inventory available for immediate shipment!

View our online application guide @ www.sharpcosweepershoes.com
e an Ad Call 800-603-9089 or E-mail dmsi@oz.net

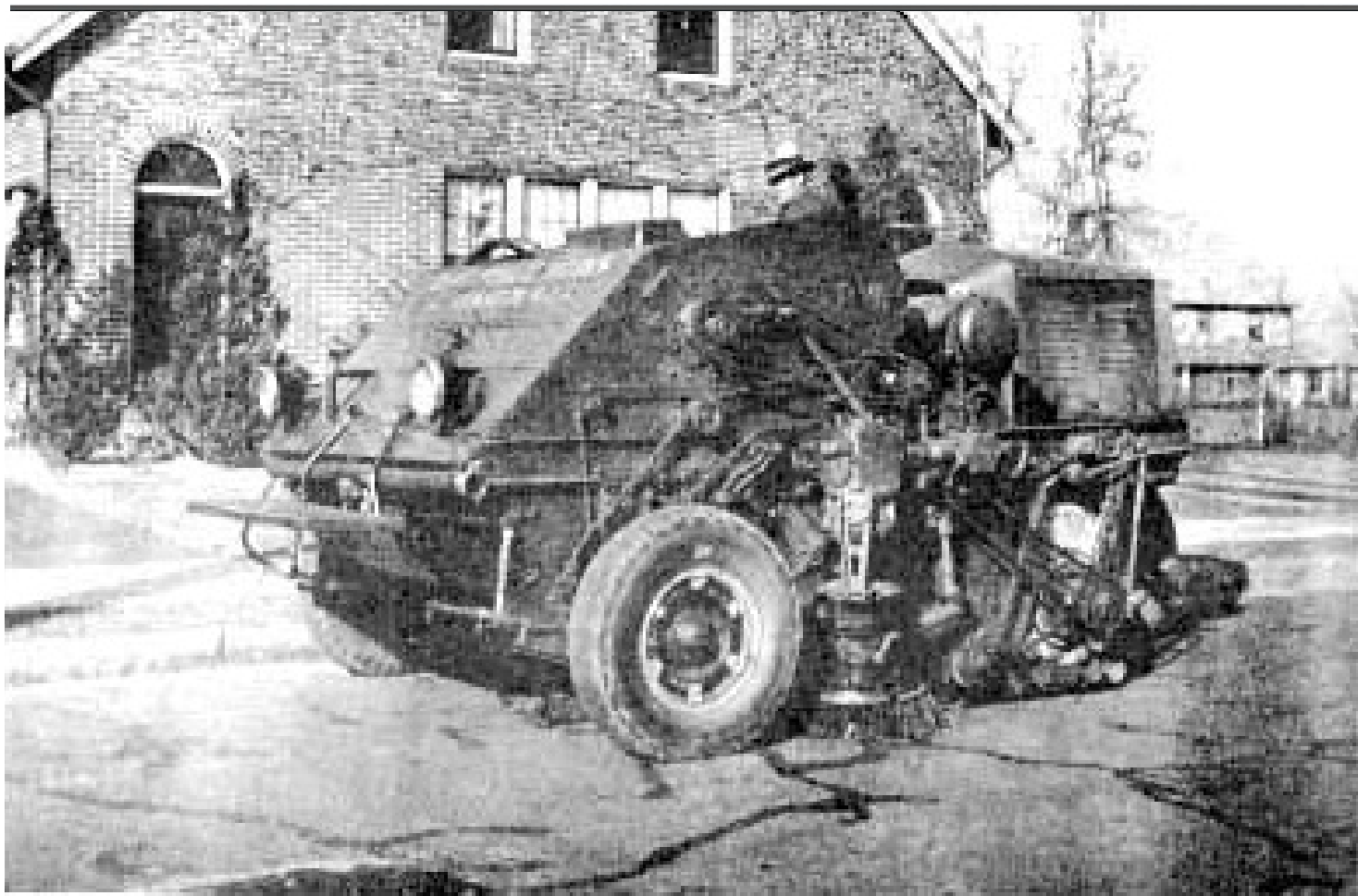
Replacement **Brooms** You Can Rely On.



Quality. Performance. On-Time Delivery

Keystone Plastics has been manufacturing the industry's leading replacement brooms for street sweeping and road construction since 1954. At Keystone we believe in reliable quality and strive to make the heaviest, longest lasting brooms in the industry. We also believe the only good broom is the one that arrives to you as promised. Contact us to find a distributor near you.

Visit kpbrush.com | Call **1-800-635-5238**



ODB Has the Parts to help SWEEP America !

**For ALL makes
and models of street
sweepers!**

*Tennant - Elgin - Sunvac
Mobil - Wayne - VacAll
Vanguard - NiteHawk
Schwarze - Johnston - Tymco*

OLD DOMINION BRUSH COMPANY



BRUSHES, BROOMS & SWEEPER PARTS



BROOMS

Wafers

Main Brooms

Gutter Brooms

PARTS

Rollers

Impellers

Splice Kits

Skid plates

Conveyor Belts

Rubber Runners

Drive Sprockets

and much more...



www.odbco.com

CALL 800-446-9823 Today!



Carolina



Jonathan Law JLaw@carolinacat.com
(336) 323-5375 (336) 669-5872

"Buy, Sell, Trade or Consign"
CarolinaCat.com



2018 LAYMOR SM300 440 hrs, 38694, CANOPY, WATER SPRAY SYSTEM **\$19,055**



2011 CAT CB54 3,009 hrs, JLM00511, OROPS, 67" DW, VERSA, WATER SPRAY SYS **\$42,000**



2014 VOLVO P7110 3,990 hrs, 5385013, PUSH ROLLER, EXT SCREED, ELEC HEAT SYS ... **\$45,000**



2011 CAT AP655D 9,814 hrs, GNZ00385, EXT SCREED, ELEC HEAT SYSTEM **\$78,000**



2018 WEILER P385B 1,890 hrs, 2521, PUSH ROLLER, EXT SCREED, ELEC HT SYS ... **\$154,000**



2019 LAYMOR SM450 1,574 hrs, 40538, CAB, AC/HEAT, KUBOTA T4F 74HP ENG **\$42,925**



2018 ROAD WIDENER SSL 1 hr, 1188, FH, STANDARD HYDS, 1'-4" RT SIDE ONLY ... **\$44,900**



2017 CAT PM622 3,118 hrs, JFC00163, OROPS, SLOPE & GRADE CONTROL **\$425,675**

JFW EQUIPMENT INC.

866-430-9539

www.jfwequipment.com Email: jfwequip@aol.com



New Marathon TPS500PT tack distributor, Honda gas eng, 18GPM pump, 500 gallon, 5 ft spray wand w/50 ft hose, 6 ft spray bar, operator's platform - **\$23,800**



2016 Volvo DD25B double drum vibratory roller, Volvo D1.7A diesel engine 3 cylinder 24 hp, 47" drums, water system - **\$32,000**



2015 Superior DT80-K broom, Kubota V3600-T turbo diesel engine, 8 ft broom, heat & a/c, water system - **\$36,000**



2016 Marathon TPS250T tack dist, Honda eng, 10 GPM pump, 250 gal, 5 ft spray wand w/40ft hose, hose reel, propane burners, flushing sys, electric brakes - **\$10,900**



New Marathon TPS250T tack distr, Honda, 18GPM pump, 250 gal, 5ft spray wand w/50 ft hose, hose reel, 6ft spray bar, operator's platform, propane burners, flushing sys **\$17,950**



New Marathon TPS115S tack dist, Honda 10GPM pump, 115 gal, 5 ft spray wand w/50ft hose, hose reel, propane burner, flushing sys **\$10,300**



2012 Rosco Max 2B distributor, 1850 gallons, Max 2B computer w/1 ft cut-offs, propane burners, 12 ft spray bar, 2012 IH Workstar 7300 w/Maxforce dsl, auto trans, 61k miles - **\$110,000**



2007 Cat PS150C pneumatic 9 wheel roller, Cat 3054C diesel, hydrostatic drive, water sys - **\$37,000**

We have some New and Used Blaw Knox and Cedar Rapids paver parts



AMBROSE
EQUIPMENT CO.

r.falkenham@ambroseequipment.com

www.AmbroseEquipment.com

603-644-8787

1401 Hooksett Rd. Hooksett, NH 03016

508-643-0044

1 Madison St., Plainville, MA 02762



2017 LeeBoy 8616 Kubota 111 HP Diesel Engine with 8-15' Legend Electric Screed. 9 Ton Conveyor Hopper and Poly Pads. SLOPING SCREED EXTENSIONS HEATED ENDGATES Power Crown **\$110,000**



2017 Leeboy 8510 Kubota 74HP Diesel Engine With 8-15' Legend HD Electric Screed. 7.5 Ton Conveyor Hopper & Steel Tracks, Berm **\$90,000**



2017 LeeBoy 8616 Kubota 111 HP Diesel Engine with 8-15' Legend Electric Screed. 9 Ton Conveyor Hopper and Poly Pads. SLOPING SCREED EXTENSIONS HEATED ENDGATES Power Crown **\$110,000**



2015 LeeBoy 1000 Kubota 44HP Diesel With 8-13' Legend Propane Screed. 5.5 Ton Dump Hopper and Steel **\$57,000**



2004 Leeboy 300B Roller Diesel motor 1.5 ton chain drive static roller **\$5,000**



2013 LeeBoy 8515B Fully Refurbished with new paint. 8-15 Electric Legend Screed Steel Tracks Powered by an 87 HP Kubota Diesel ENGINE Tracks **\$76,000**

LBIP LeeBoy Rosco

WACKER NEUSON

BEUTHLING

ROADTEC
Salsco, INC.
LEADER BY DESIGN

DYNAPAC
Miller Curber Co. LLC

SAKAI
MASTERS OF COMPACTION
INTERSTATE



2003 Schwartz M6000, 46,000 miles, 6700 hrs. New elevator, hyd pump, Hydraulic and manifold, rebuilt hopper. Asking \$98,000, Wayne at 520-240-3243 (x/K-21)



2012 UD 2300 it has 127,484 miles. It is a cab and chassis only asking \$40,000 Please contact Donnie Harp 859-583-6893 / donnie@centralseal.com or Michael Lee 606-669-9396 / mlee@centralseal.com for mor info.



2006 GMC T8500 longline line 8000lb thermo truck. It has 91679 miles and comes with some extra parts asking \$150,000.00. Please contact Donnie Harp 859-583-6893 / donnie@centralseal.com or Michael Lee 606-669-9396 / mlee@centralseal.com for more info.



2001 Mack MS200 Marker/Grinder truck. It has 190779 miles comes, extra parts asking \$65,000. Contact Donnie Harp 859-583-6893 / donnie@centralseal.com Michael Lee 606-669-9396 / mlee@centralseal.com for more info.

Low Miles
Low Hours
A/C - Tilt Wheel

2010 & 2012 Global MX3's
Dual Gutter Brooms

High Dump
w/Auto greasing
System



WAS \$56,900 REDUCED TO STARTING \$44,900



**\$42,900
Reduced
Again**

(2) 2010 - 2012 Global MX-3 High Dump Sweepers, Dual Gutter brooms, 4-cylinder, John Deere 4045-T Turbo, 22000+28000 actual Miles, 3,526 to 4,611 Actual Hours, A/C, Tilt, Plush interior, Stereo, hydrostatic drive, Auto lube Sys, Ex Municipal, No rust, A-1 Mint condition #5064, 5065

**Prairie Truck
& Auto Sales**

608-842-3040
Weekends: 608-575-1143
7646 Conifer Ct. De Forest, WI 53532
www.prairietruck.com

STEWART-AMOS
Sweeper Co.

Mechanical & Regenerative Air Street Sweepers

EFFECTIVELY SIMPLE.

Powerful
Brooms



Regenerative
Air Power

We have the right sweeping solutions for you.

Contact us today at 800.482.2302
WWW.STEWART-AMOS.COM



2000 Athey Mobil M9D. High dump.. dual steering.. ex city unit. 5200 hours. Tags good till 2020. \$20,000 Obo 510-685-0923. Call or Text



2 ton Ray-Tech propane fired hot box, Six Years old, in Excellent condition. 10,000 call 203-910-1056 (x/C-22)



A000 Gallon Sealer Bulk Tank, gas engine, belt drive Viking pump and off-center mixer. Cleanout cover, used for last 35 years consecutively, 16' long x 8' diameter. Call Fred at 216-341-0883 (x/G-21)



Seven year old Ray tech trailer mounted infrared heater, four propane tanks, excellent cond well maintained, wind shield on three sides of the main panel, Good tires. This unit and the one above are a package deal both \$20,000 call 203-910-1056 (x/C-22)



Wylie Road Master Hotbox Trailer, 4 ton asphalt trailer with insulation and elec. Heat good condition 209-668-3266 \$4,500 (x/K-21)



ATTACH Slide in Truck sweeper, New motor Zero hours, asking \$10,000 620-249-9716 (x/G-22)

Your Broom Source for Municipal & Contractor Sweeping ...any sweeper, any attachment



gutter brooms
strip brooms
tube brooms
wafer brooms
hard parts too!

try our NEW gutter brooms

RAVO



Wolverine



www.united-rotary.com

800-851-5108

urbsales@united-rotary.com

SQUEEGEES, SEALCOAT TRAILERS, SEALCOAT SKIDS, HOT TACK SKIDS



200 GALLON HOT TACK



500-700 SEALCOAT TRAILERS



350 GALLON SKID

DISTRIBUTORSHIP AVAILABLE

VISIT SEALMATE.COM



RAPWRANGLER

1. Incoming RAP enters the 30" X 42" receiving hopper (22" X 36" on 10HP Model)

2. The breaker plate forces asphalt material against the spinning rotor in the crushing chamber

3. A bypass spring allows reject material to be ejected from the chamber

3 MODELS TO FIT YOUR TONNAGE REQUIREMENTS

4. RAP is milled to 1" diameter or less

The 10HP processes between 40 to 60 tons of Rap per hour

The 30HP processes up to 210 tons of Rap per hour

The 50HP processes up to 250 tons of Rap per hour

The RAPWRANGLER is a portable crushing machine that renders football-sized chunks of asphalt to suitable gradations of 1-inch diameter or less at a rate of up to 250 tons per hour for introduction to drum mixers or batch plants.

First, a conveyor drops chunks of asphalt material into the 30-by 42-inch receiving hopper. The hopper allows material to fall to a crushing chamber where a 20-inch rotor spins at 127 rotations per minute. Depending on the producer's needs, a 10, 30 or 50-horsepower TEFC motor powers the class 2 shaft mount reducer in the crushing/milling chamber. As material falls from the hopper, a gradation-adjustable breaker plate of 1/2-inch AR450

steel pushes the material that is inside the chamber against the spinning rotor, which boasts 312 replaceable tungsten-tipped milling teeth. Here, a bypass spring allows foreign material such as hard concrete, up to 4 inches, to be ejected from the chamber. A discharge conveyor carries this away.

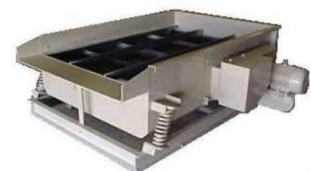


At the base of the chamber, a fixed row of replaceable milling teeth mounted on the bottom section of the breaker plate grinds asphalt material further.

When material has reached the desired gradation, it falls through the base opening to a waiting shaker screen, which sizes material before sending it to another conveyor for transfer to the RAP collar on the drum

ACE Group
Asphalt Contractor Equipment
MINNESOTA, USA
1-888-878-0898
1-888-310-2185
michael@asphaltace.com
www.asphaltace.com

ALSO, ASK ABOUT OUR SHAKER DECKS!!



Several Sizes Available!!